

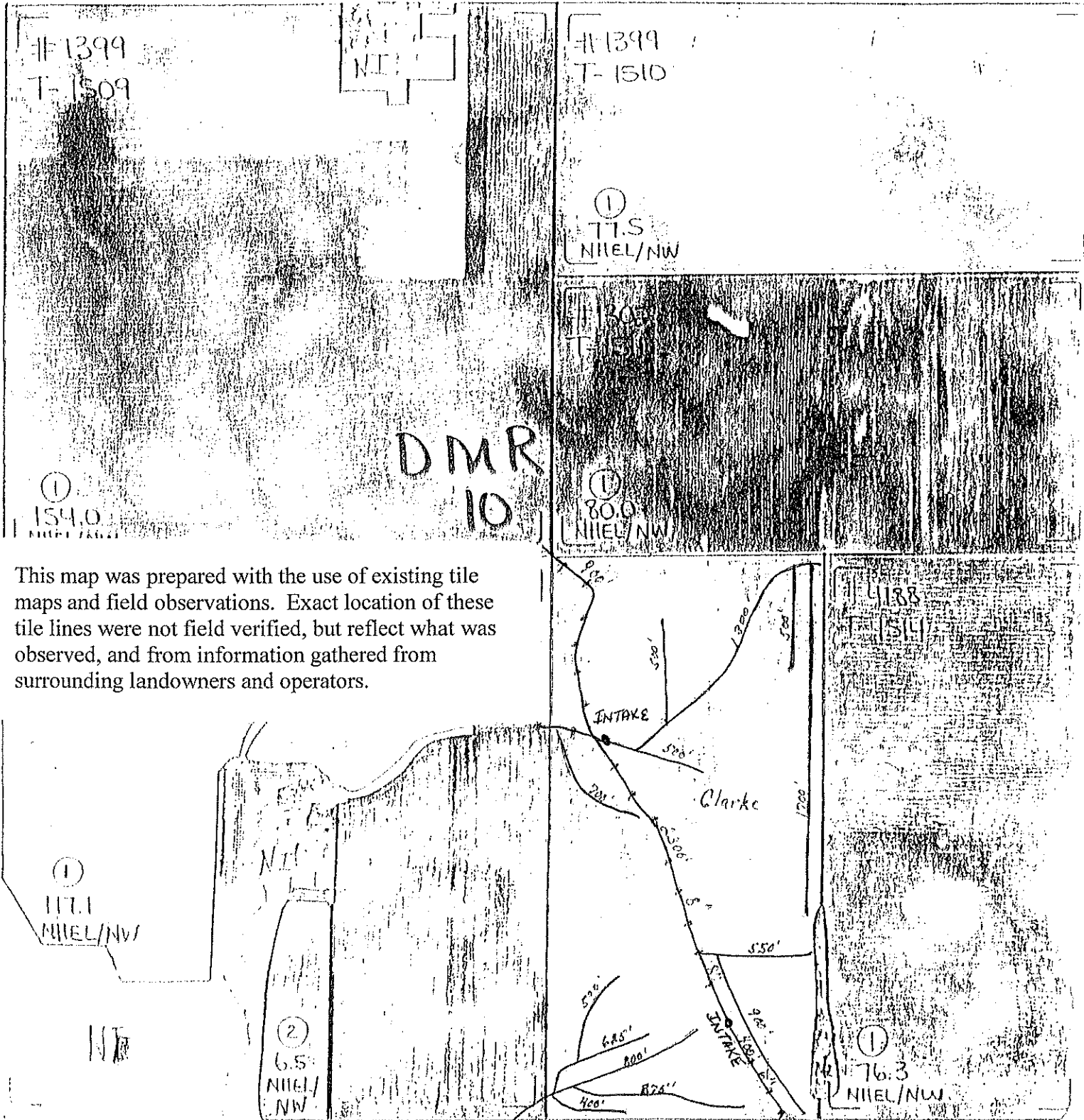
WATERFLOODED WETLAND	DEEP WATER FLOODED WETLAND	PERMANENTLY FLOODED WETLAND	PERMANENTLY FLOODED WETLAND
RECOMMENDED CONVERSION WETLAND	RECOMMENDED CONVERSION WETLAND	RECOMMENDED CONVERSION WETLAND	RECOMMENDED CONVERSION WETLAND
RECOMMENDED WETLAND	RECOMMENDED WETLAND	RECOMMENDED WETLAND	RECOMMENDED WETLAND
REPAIRED WETLAND	REPAIRED WETLAND	REPAIRED WETLAND	REPAIRED WETLAND

COUNTY Murray

SCALE 1" = 100' | DATE Feb | CROP | PHOTO H-15

YEAR 00

WARNING: CONTACT DNR BEFORE CLEARING, DRAINING, GRADING, FILLING OR LEVELING ANY WET AREAS OR WETLAND-CODED FIELDS OR IMPROVING, MODIFYING OR MAINTAINING AN EXISTING DRAINAGE SYSTEM.



This map was prepared with the use of existing tile maps and field observations. Exact location of these tile lines were not field verified, but reflect what was observed, and from information gathered from surrounding landowners and operators.

AW-ARTIFICIAL WETLAND	FWS-FARROW WETLAND FEATURE	NREL-NON HIGHLY ERODIBLE LAND	PC-PRICE CONVERTED WETLAND
CC-COMMENCED CONVERTED WETLAND	REL-HIGHLY ERODIBLE LAND	NC-NON CROPLAND	T-TRACT NUMBER
CW-CONVERTED WETLAND	MC-MULTIPLE TRACT NUMBER	NI-NON INVENTORIED	W-WETLAND
FW-FARMED WETLAND	MM-MINIMAL EFFECT WETLAND	NH-NON WETLAND	GRS-NOT REGULATED BY FEDERAL GOV. (SEE)

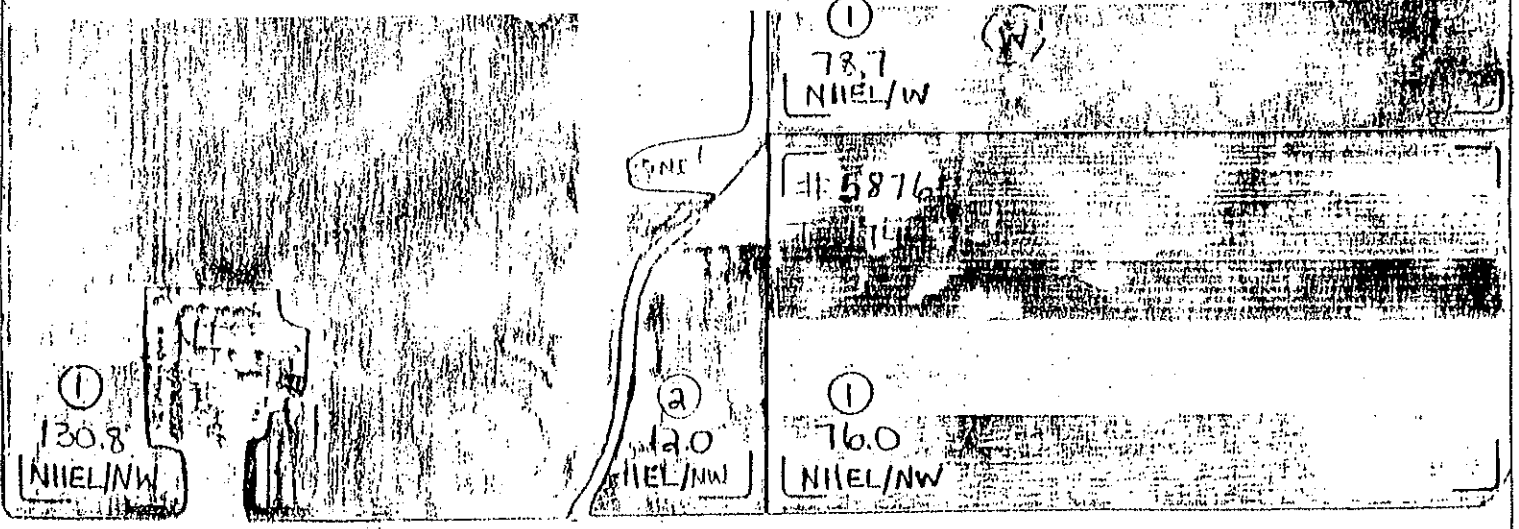
COUNTY Murray | NOT TO BE REPRODUCED | CROP YEAR 00 | PHOTO NO. I-15
 SCALE | Feb

WARNING: Contact NRCS before clearing, draining, dredging, filling or leveling any wet areas, wetland coded fields or improving, modifying or maintaining an existing drainage system.



This map was prepared with the use of existing tile maps and field observations. Exact location of these tile lines were not field verified, but reflect what was observed, and from information gathered from surrounding landowners and operators.

5711
T-10337

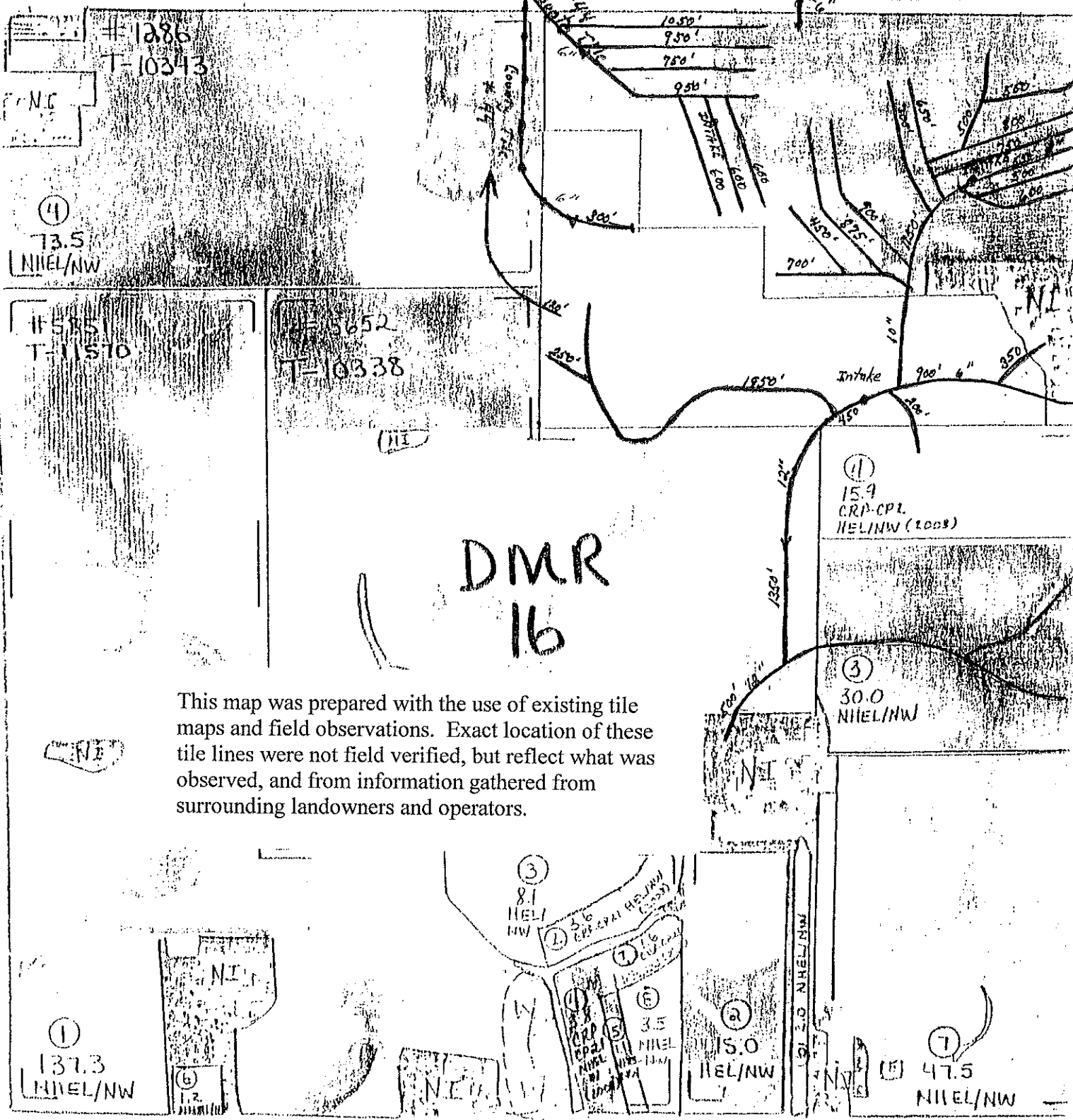


WETLAND	WETLAND PASTURE	WETLAND HIGHLY ERODIBLE LAND	WETLAND CONCRETE WETLAND
WETLAND CONCRETE WETLAND	WETLAND HIGHLY ERODIBLE LAND	WETLAND CONCRETE WETLAND	WETLAND CONCRETE WETLAND
WETLAND CONCRETE WETLAND	WETLAND CONCRETE WETLAND	WETLAND CONCRETE WETLAND	WETLAND CONCRETE WETLAND

Murray

NOT TO BE REPRODUCED | CROP | PHOTO | I-14
 SCALE | Feb | YEAR 00 190.

WARNING: Contact NRCS before clearing, draining, dredging, filling or leveling any wet areas wetland coded fields or improving, modifying or maintaining an existing drainage system.



This map was prepared with the use of existing tile maps and field observations. Exact location of these tile lines were not field verified, but reflect what was observed, and from information gathered from surrounding landowners and operators.